

NOTES :
 THIS DRAWING WITH ALL ITS CONTENTS IS THE SOLE INTELLECTUAL PROPERTY OF M/S. SUNANDO DASGUPTA AND ASSOCIATES. COPYING OF THIS DRAWING OR PART THERE OF OR ITS USE IN ANY FORM WHAT SO EVER WITHOUT THE WRITTEN PERMISSION OF M/S. SUNANDO DASGUPTA AND ASSOCIATES IS PROHIBITED.

2. ANY DISCREPANCY IN THE DRAWING SHALL BE BROUGHT TO THE NOTICE OF ARCHITECT BEFORE EXECUTION OF THE WORK.
3. THE DRAWING SHALL NOT BE SCALED. ONLY WRITTEN DIMENSIONS SHALL BE FOLLOWED.
4. THE DETAILED DRAWINGS SHALL BE FOLLOWED FOR THE AREAS FOR WHICH THEY HAVE BEEN PROVIDED.

S. NO.	DESCRIPTION	DOOR	W	H	FINISH	REMARKS
1	DOOR	2000	2000	0	2000	FRAM DOOR
2	DOOR	2000	2000	0	2000	PVC DOOR
3	DOOR	2000	2000	0	2000	FRAM DOOR
4	DOOR	2000	2000	0	2000	FRAM DOOR
5	DOOR	2000	2000	0	2000	FRAM DOOR
6	DOOR	2000	2000	0	2000	FRAM DOOR
7	DOOR	2000	2000	0	2000	FRAM DOOR
8	DOOR	2000	2000	0	2000	FRAM DOOR
9	DOOR	2000	2000	0	2000	FRAM DOOR
10	DOOR	2000	2000	0	2000	FRAM DOOR
11	DOOR	2000	2000	0	2000	FRAM DOOR
12	DOOR	2000	2000	0	2000	FRAM DOOR

1 PDF COPY 31.07.2018 MR HARIOM, SIDBI, NEW DELHI

PRINT ISSUE :

NO.	DATE	DESCRIPTION
REVISION :		

PROJECT :-
 ATMARAM HOUSE INTERIOR,
 1, TOLSTOY MARG,
 BARAKHAMBHA, NEW DELHI,
 DELHI 110001

CLIENT :-
 SMALL INDUSTRIES
 DEVELOPMENT BANK OF INDIA

DRAWING TITLE :-
 FIRST AND SECOND FLOOR
 LAYOUT PLAN

SCALE: 1:125 DATE: 31.07.2018

DWG. SIDBI/ATMARAMHOUSE/ARCH/01

WORK STAGE :-
 TENDER DRAWING

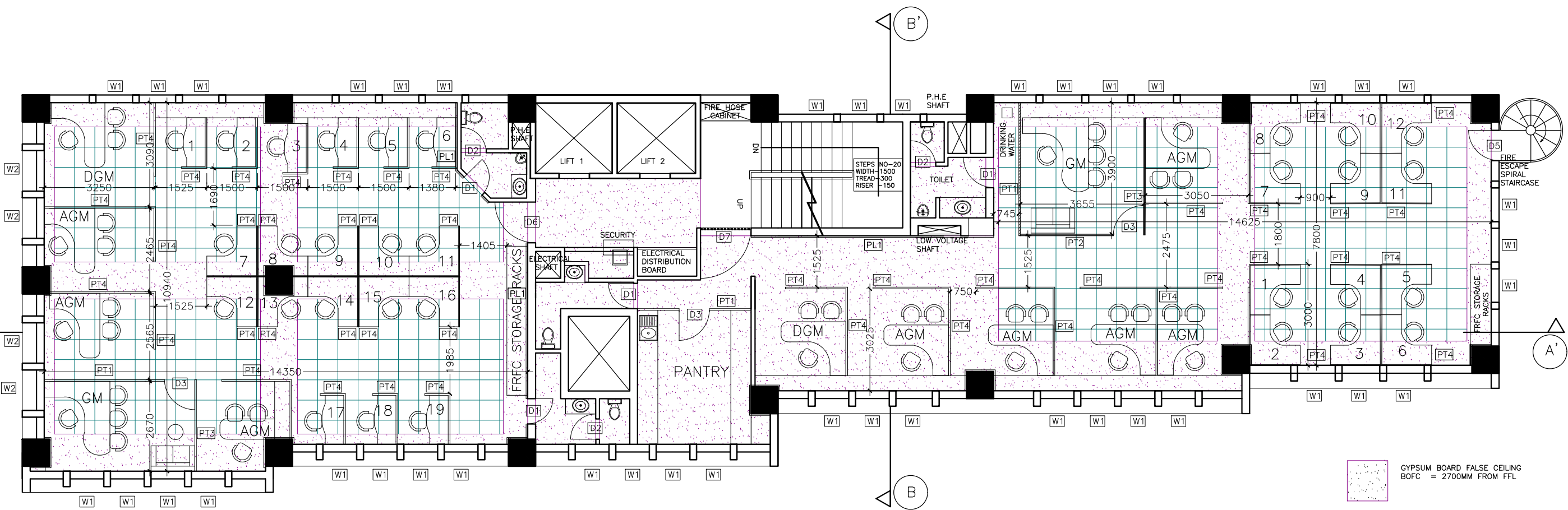
DEALT BY : ARUN SAINI

CHECKED BY: DEEPANSHU

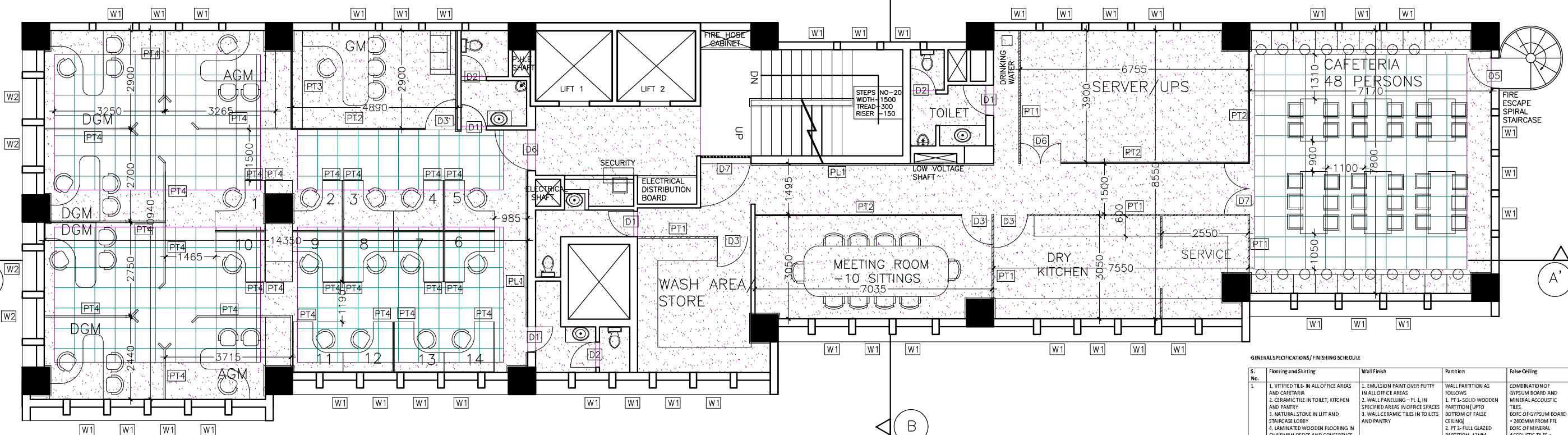
APPROVED BY : S. DASGUPTA

ASSOCIATE STRUCTURAL CONSULTANT :-

PRIME CONSULTANT:
 SUNANDO DASGUPTA AND ASSOCIATES
 210, 2nd FLOOR AJIT SINGH COMPLEX
 PLAZA MARKET YASUVIDHARA ENCLAVE
 DELHI - 110006, INDIA
 TEL - FAX - 91-11 - 2818622
 E-mail: info@sdarchitect.com
 website: www.sdarchitect.com



FIRST FLOOR LAYOUT PLAN



SECOND FLOOR LAYOUT PLAN

- Gypsum Board False Ceiling
BOFC = 2700MM FROM FFL
- Mineral Acoustic Tiles.
BOFC = 2400MM FROM FFL

GENERAL SPECIFICATIONS / FINISHING SCHEDULE

S. No.	Flooring and Skirting	Wall Finish	Partition	False Ceiling
1.	1. VITRIFIED TILE IN ALL OFFICE AREAS AND CAFETERIA 2. CERAMIC TILE IN TOILET, KITCHEN AND PANTRY 3. NATURAL STONE IN LIFT AND STAIRCASE LOBBY 4. LAMINATED WOODEN FLOORING IN CHAIRMAN OFFICE AND CONFERENCE ROOM	1. EMULSION PAINT OVER PUTTY IN ALL OFFICE AREAS 2. WALL PANELING - PL L IN SPECIFIED AREAS IN OFFICE SPACES 3. WALL CERAMIC TILES IN TOILETS AND PANTRY	WALL PARTITION AS FOLLOWS 1. PT 1- SOLID WOODEN PARTITION (UP TO BOTTOM OF FALSE CEILING) 2. PT 2- FULL GLAZED PARTITION- 12MM TOUNSHENED GLASS (UP TO BOTTOM OF FALSE CEILING) 3. PT 3- PARTIALLY SOLID PARTIALLY GLAZED 8MM THICK GLASS PARTITION (UP TO BOTTOM OF FALSE CEILING) 4. PT 4- 1200MM HIGH WOODEN PARTITION	COMBINATION OF GYPSUM BOARD AND MINERAL ACOUSTIC TILES. BOFC OF GYPSUM BOARD = 2700MM FROM FFL BOFC OF MINERAL ACOUSTIC TILES = 2700MM FROM FFL

For SUNANDO DASGUPTA & ASSOCIATES
 S. Dasgupta
 Proprietor

FOR TENDER PURPOSE ONLY